

CITY CENTRE

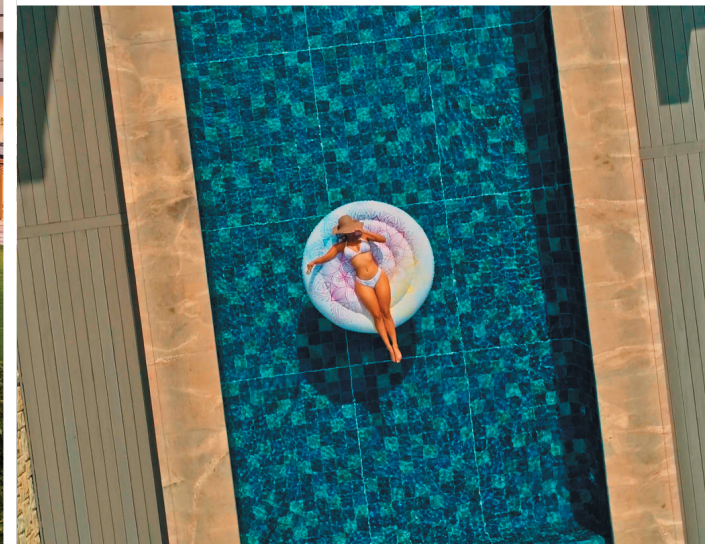


STEYN CITY

PARKLAND RESIDENCE

REDEFINING URBAN ELEGANCE

Welcome to City Centre, where urban pulse meets parkland serenity in a destination inspired by Europe's finest cities, and where luxury apartment living is reimagined for the modern era. Here, spacious one-, two-, three- and four-bedroom apartments and penthouses, built over five and six storeys around treed piazzas, are meticulously designed to create a sanctuary of effortless style and distinction.



City living where everything you need is moments away, and every detail is designed for how you want to live today.



Top-of-the-range kitchen appliances and premium sanitary fittings

Access to 2,000 acre parkland with world-class facilities

Spacious apartment living

Retail, wellness, dining and leisure on your doorstep

SECURE, LUXURY APARTMENT LIVING

These apartments are thoughtfully designed, with select homes offering private studies, separate TV lounges, large entertainment areas and even internal lifts. Beautiful kitchens and elegantly appointed bathrooms showcase premium finishes and exceptional craftsmanship. An exclusive-use rooftop pool, a super basement accommodating 2,000 cars, and convenient storage facilities enhance everyday living. Security is uncompromising, with advanced biometric access and a dedicated security hub offering exceptional peace of mind.



WELLNESS, LEISURE AND EVERYDAY EASE

With an emphasis on convenience and wellbeing, everything is within easy walking distance. Residents enjoy restaurants and coffee shops, retail, a hotel and conference facilities, shared workspaces, a fitness centre, as well as a Wellness Hub with a Reformer Pilates studio and Revive Wellness Centre's physiotherapists and biokineticists – all within a few steps from home.



ACCESS AN EXTRAORDINARY LIFESTYLE

Life at City Centre offers access to the estate's 2,000 acres of indigenous parkland and its exceptional leisure facilities. Residents enjoy the Clubhouse precinct with a Pro Shop, golf academy, gym, tennis and pickleball courts, as well as the world-class Saxon Spa Steyn City. Throughout the estate are resort-style pools, an equestrian centre and clubhouse, a private school campus from Grade 000 to Matric, as well as extensive walking and cycling trails. The Lagoon precinct completes the experience with its 300m crystal-clear lagoon, water sports and padel courts, making every day feel like a holiday.



- Children's Play Nodes • Commercial & Shared Workspace • Equestrian Centre & Stabling • Fitness Centres • Private School • Sport & Recreation • Championship Golf Course
- Retail • 300m Lagoon • Racquet Sports • Ultimate Helistop • Safety & Security • Walking & Cycling Trails • Steyn City Hotel by Saxon • Saxon Spa Steyn City



Book your viewing. Contact Pam Golding Properties Steyn City Sales Team
Mark Williams 082 559 2989 or Wilhelm Khumalo 072 045 4388 | steyncity.co.za



Scan to learn more